



Sweyns Mead, Chells Manor, Stevenage, SG2 0JZ

Geoffrey Matthew Property Management are delighted to offer this extremely well maintained Two Bedroom Semi Detached House. This property is in a prime position within a quiet cul-de-sac in the sought after Chells Manor area. The accommodation in brief is a Lounge, Fitted Kitchen With White Goods, Downstairs WC, two Double Bedrooms & Family Bathroom. Enclosed rear garden and garage With drive.

Available mid December - Viewing is recommended.

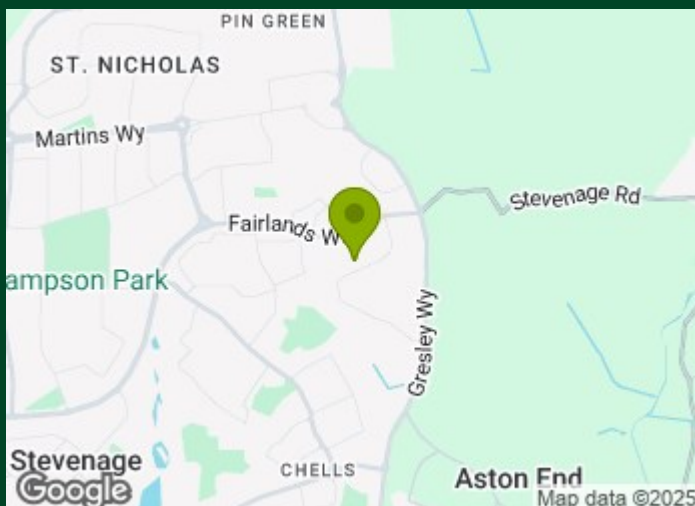
A Holding deposit equivalent to one week's rent payable to apply for this property.

£1,500 Per Calendar Month

Sweyns Mead, Chells Manor, Stevenage, SG2 0JZ



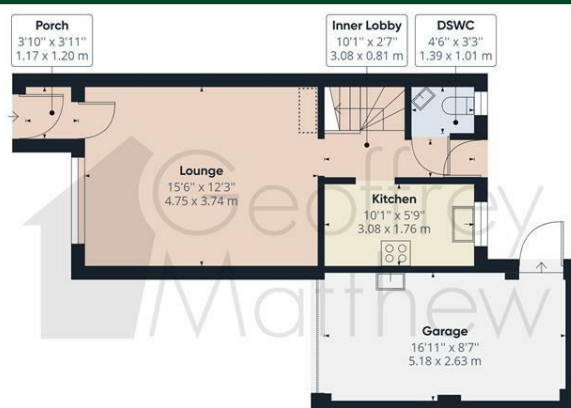
- Two Bedroom House
- Lounge
- Two Double Bedrooms
- Garage & Drive
- Chells Manor Area
- Fitted Kitchen
- Bathroom
- AVAILABLE MID DECEMBER
- Downstairs Cloakroom
- Rear Garden



[Directions](#)



Floor Plan



Floor 0 Building 1



Floor 1 Building 1



Geoffrey
Matthew

Approximate total area⁽¹⁾

760.27 ft²
70.63 m²

Reduced headroom

3.89 ft²
0.36 m²

(1) Excluding balconies and terraces

☐ Reduced headroom
(below 1.5m/4.92ft)

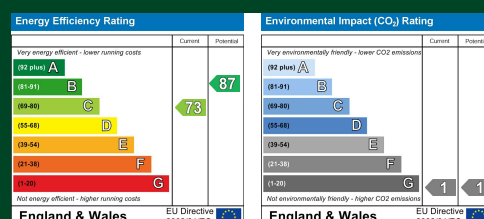
While every attempt has been made to ensure accuracy, all measurements are approximate, not to scale. This floor plan is for illustrative purposes only.

GIRAFFE360

Council Tax Details

Stevenage Borough Band C

These particulars, whilst believed to be accurate are set out as a general outline only for guidance and do not constitute any part of an offer or contract. Intending purchasers should not rely on them as statements of representation of fact, but must satisfy themselves by inspection or otherwise as to their accuracy. No person in this firm's employment has the authority to make or give any representation or warranty in respect of the property.



Old Harlow: 01279 444988 Email: harlow@geoffreymatthew.co.uk
Great Ashby: 01438 740111 Email: greatashby@geoffreymatthew.co.uk